

ADLY AT V-300 S/U

ROAD VERSION

OWNER'S MANUAL

CONTENTS

	Page
1. Foreword -----	1
2. Warning -----	2
3. Safety Notes -----	3
4. Specifications -----	4
5. Periodical Check and Services -----	5
6. Check Period to Operate -----	6
7. Operation -----	10
8. Correct Way of Driving -----	22
9. Abnormalities and Trouble Shooting -----	24
10. VIN number and service record -----	25
11. Assembly Instruction -----	26
12. Pre-Delivery Inspection -----	30

FOREWORD

May we, the manufacturer, take this opportunity to thank you for choosing our **ATV** to serve you.

This Owner's Manual is prepared for you the details as to operate and maintenance necessarily to perform in safety. Therefore, we would like you to read the manual before operate the vehicle.

It is our sincere wish that you enjoy operating the **ATV** and getting fun from it. Should you have any problems, please feel free to contact our local dealer in your area.

WARNING

- **OPERATOR ONLY**

This vehicle load limit and seating configuration is designed for operator only.

It is not safe for carrying a passenger.

- **ADULT SUPERVISION AND INSTRUCTION ARE REQUIRED**

- **THIS VEHICLE IS NOT FOR YOUTH UNDER 16 YEARS OLD.**
 - **ALWAYS WEAR A HELMET**
 - **READ THIS OWNER'S MANUAL CAREFULLY**
 - **DO NOT OPERATE THIS VEHICLE IN THE NIGHT.**
- IT'S DANGEROUS TO DRIVE ON AN UNCLEAR ROAD CONDITION.**

SAFETY NOTES

- Don't allow your child to ride without your supervision.
- Keep a safety distance between your vehicle and other vehicles.
- This vehicle is designed to be operated only on level, off road surfaces, free of obstacles.
- Both the parent and their children must fully understand everything in this manual before riding.
- When operate this vehicle on public streets, do not make turns with high speed to avoid tumble-over. This vehicle does not equipped with differential gears.
- Do not operate this vehicle while under the influence of alcohol or drugs. This can impair judgement and result in serious injury or even death.

SPECIFICATIONS

ENGINE CAPACITY	ATV-300S	ATV-300U
TYPE	Air-cooled_4 stroke	
STARTING	ELECTRIC	
LUBRICATION	Wet sump	
TRANSMISSION	Manual shift / 5 speed with reverse	
SPARK PLUG	NGK, CR8E	
BATTERY	YTX9-BS	
OIL CAPACITY	2.0 Liter	
FUEL TANK	8.2 Liter	
OVERALL LENGTH	1740 mm	1700 mm
OVERALL WIDTH	1030 mm	1030 mm
OVERALL HEIGHT	1080mm	1070 mm
SEAT HEIGHT	750mm	750 mm
WHEEL BASE	1160 mm	1160 mm
CLAIMED DRY WEIGHT	190 kg	200 kg
BRAKE	Front: R/L Disc Brake Rear: Disc Brake	

SUSPENSION	Front: Dual A-arm with 5 way preload-adjustable shocks Rear: Swing arm with 5 way preload-adjustable shock
FRONT TIRE	21 x 10-8
REAR TIRE	21 x 7-10

PERIODICAL CHECK & SERVICES

Maintenance Schedule

The maintenance intervals in the following table are based upon average riding conditions. Riding in unusually dusty areas, require more frequent servicing.

Items \ Time of service	Initial Service (first week)	Monthly	Quarterly	Yearly
Air cleaner			C	C,I
Petrol filter/Fuel Tube	I		I	
Tire pressure/Wear	I	I		
Battery			I	
Brake tolerance & Steering handle	I	A		
Shock absorber		I		
Tightness of screws	I	I		
Spark plug			C	
Replace gearbox oil				I
Lubricating of chassis			C,G	I
Carburetor	I		A	C
Drive chain	I		I,G	
Oil quantity	I	I	C	

C: Clean; A: Adjust; G: Grease; I: Inspection, check, replace if necessary

CHECK PRIOR TO OPERATE

Inspect your vehicle every day before you run it. It only takes a few minutes to check and may save your life.

- _ Check the tires condition and pressure.
- _ Check the nuts, bolts and other fasteners.
- _ Check the drive chain condition and slack.
- _ Check the engine stop switch for good function.
- _ Check the throttle for smooth opening and closing.
- _ Check the fuel level in fuel tank and oil level in oil tank.
- _ Check the brake operation to see is there any tie-up by brake cables.
- _ Check the easiness for turning to the left and right of steering handle.
- _ Check brake lever for effective braking. The free play should be between 1-2 cm (about 1/2 inch). Try braking soon as you are driving off.

CHECK PRIOR TO OPERATE

(1) Check and / or Refill Oil

CAUTIONS_

- _ Be sure to have sufficient oil, and the cap is installed correctly.
- _ Total oil capacity_2.0 Liter
- _ Prescribed oil: 4-stroke engine oil only, synthetic type is recommended.
- _ Use grade SAE 90 for transmission gear oil.
- _ Long distance driving would damage or burn out the engine parts if oil is insufficient.
- _

(2) Check and refill fuel

CAUTIONS_

CH
(1)

- _ Stop the engine for refilling.
- _ Use unleaded gasoline with octane level 92 or higher.
- _ Turn the gasoline cap clockwise to tight up. Counter clockwise to loose it.
- _ Do not over fill the gasoline, it could cause fire when the engine is hot.

Tire size: front 21x7-10

Rear 21x10-8

Recommended tire

pressure: 10 psi (0.35 kgf/cm²)

Max. pressure : 15 psi (1.05 kgf/cm²)

Min. pressure : 3.5 psi (0.245kgf/cm²)



_ Do not inflate the tire pressure as indicated on the tire.

Check if there is any gravel in the tread grooves or any nail puncture. If so clean it.

- Check for any crack or heavy worn-out, then replace it with new ones, if worn-out exceeds the limit.
- Detailed tire specification please check the marking on tires.

CHECK PRIOR TO OPERATE

(1) Check battery

- Open the seat.
- Remove positive and negative terminals (negative first).
- Remove battery and check voltage.
- Normal voltage_12V and above
- Keep terminals clean constantly.
- Charge the battery base on the instruction. printed on battery



(2) Check front and rear shock absorbers.

- Apply pressure on both front steering handle and seat to check the function of front and rear absorbers.

(3) Check if exhaust is normal.

OPERATION

MAIN SWITCH

OFF

- _ To turn off the engine.
- _ The key can be extracted.

ON

- _ To start the engine.
- _ The key can not be taken out.



- _ To operate the head light.
- _ The key can not be taken out.



OPERATION



ELECTRIC STARTER

- _ Cranks the engine.

CAUTIONS_

- _ Don't push down again the starter button as the engine is running.
- _ Don't press the starter button more than 10 seconds when start up.

F

-  Low beam
- _ For normal condition.
-  High beam
- _ For farther lighting.



OPERATION

HORN BUTTON

- _ Turn on main switch and press down the horn button, the horn will sound.

OPERATION

SIGNAL LIGHT SWITCH

_ Right signal light flashing indicates turning to the right.

L Left signal light flashing indicates turning to the left.

CAUTIONS_

- _ Turn on signal light for turns.
- _ Turn off signal light after turning.



OPERATION

HAZARD WARNING SWITCH



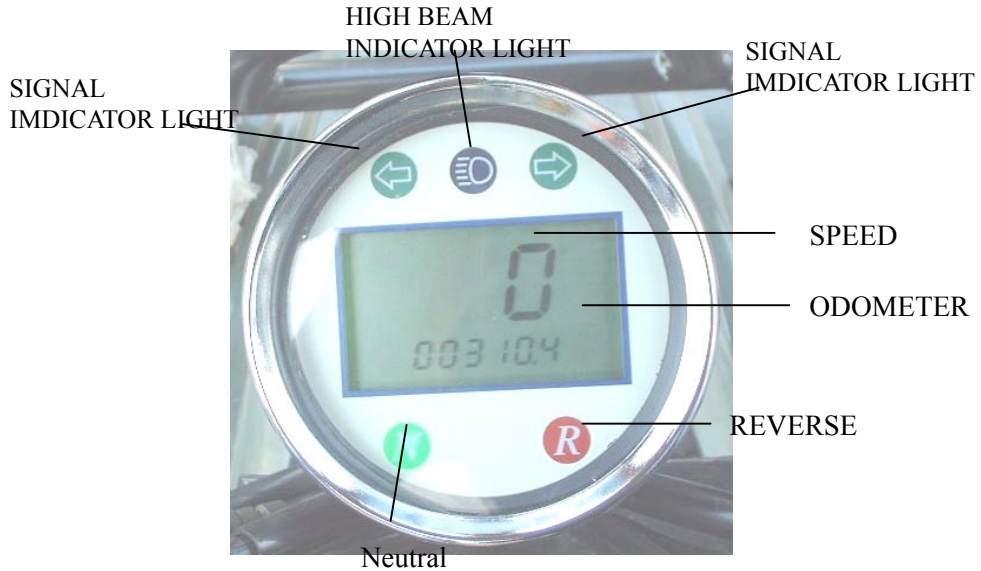
HAZARD

- The 4 direction lights will start blinking together.
- STOP



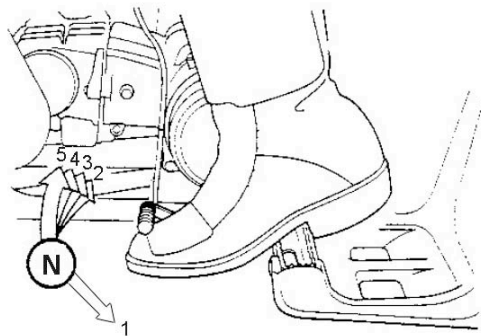
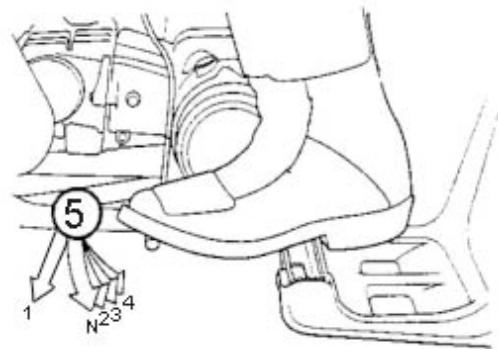
NOMENCLATURE & OPERATION

INSTRUMENTPANEL



OPERATION

GEAR SHAFT DOWN



GEAR SHAFT UP

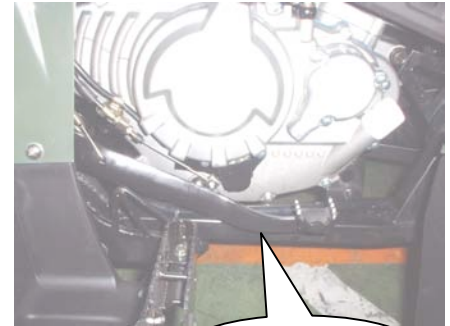
OPERATION

FRONT / REAR BRAKE

The foot brake pedal is located on the right side in front of the foot rest. When step on the brake pedal, 4 wheels will stop at same time.

PARKING BRAKE LEVER

Pull the right brake lever will perform brake function
Push the locking will lock the brake.



Break pedal



Parking brake

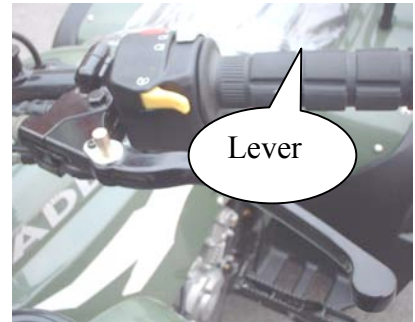
OPERATION

BRAKE RELEASE PARKING

1. Pull the right lever firmly.
2. Press the lever downward to the fixed brake As brake position is fixed, the wheels will stop.
3. Pull the brake lever tightly, the fixed lever will bound off.
4. There will be no brake function after brake lever is released

CLUTCH LEVER

- * The left lever is to dis-engag the clutch function.
- * Push the bottom to operate reverse function.



RELEASE REVERSE FUNCTION

1. Push the bottom on left and pull lever.



2. push the rod left side of the gear to neutral.
engine to set into neutral. push the bottom on left lever and pull the lever to dis-engage the clutch.

CAUTIONS_

Stop the vehicle completely before operate the reverse

the rod on left

4. the reverse indicator will on.
5. slowly release the left lever to perform reverse function.



OPERATION

ENGINE START-UP & CAUTIONS

- _ Check oil and fuel prior to start-up.
- 1. Turn “Main Switch” on.
- 2. Start engine
 - Use of electric starter, throttle lever should be at the “close” state and set the gear to neutral..
 - Then push the starter button..

CAUTIONS_

- _ Release the starter button immediately after engine start-up.
 - _ Do not press the button again as engine is running, or parts may be damaged.
 - _ Start-up the engine at an open area since the exhaust gases from the engine is poisonous carbon monoxide.
- _ In case the engine will not start after the starter running 3 ~ 4 seconds, push the throttle lever slightly, then try again and engine should start.
 - * Use choke function on bottom of left switch if the temperature is low and difficult to start.

OPERATION FUEL VALVE

- The fuel valve is located on the left side of the vehicle.
- When the arrow mark on the lever pointed at “ON” position, the fuel is supply under normal condition.
- When the arrow is pointed at “OFF”, the fuel can not supply.
- When arrow mark pointed at “RES”, please refill the gasoline as soon as possible.



C O R R E C T W A Y
S T A R T O F D R I V I N G



O F D R I V I N G

Press the throttle lever slowly to control your

speed.

- _ Acceleration is to increase the speed. Slowly press the throttle lever while driving on a slope. It will activate the engine power.
- _ Deceleration is to decrease the speed. Release the lever will do.
- _ Because the rear wheel does not provide differing rate of wheel rotation. The rider must learn to move his weight and control the throttle not to thumb over.



Throttle lever/

CORRECT WAY OF DRIVING STOP OF THE VEHICLE

Approaching to the parking point.

- _ Release the accelerator and apply both front and rear wheel brakes while the vehicle is stopped.

Complete stop

- _ Engine will stop as the main switch turns to “ OFF ” .
- _ Don't park on uneven ground to avoid tipping over.

CAUTIONS_

- _ Don't turn the main switch or engine stop switch to "OFF" during operation.

During the first couple weeks of riding, do not run the vehicle very fast and do not approach maximum RPM of the engine. The brake-in process will greatly increase the lifetime and long term power of the engine.

ABNORMALITIES AND TROUBLE SHOOTING

If the engine fails to start.

Engine fails to keep running.

Try to diagnose these malfunctions yourself first as follows.

- _ Check the engine stop switch is in the RUN position.
- _ Check the gas tank if fuel is available and sufficient.
- _ Whether the procedure for engine start-up is correct

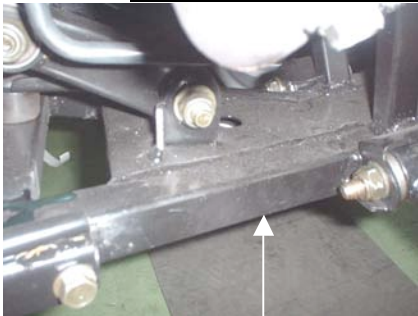
Contact the local dealer as soon as possible for checking on any abnormality of your vehicle.

PRODUCT IDENTIFICATION NUMBER

Please record the frame and engine number for reference.

The frame number (VIN) is stamped on the right side of frame.

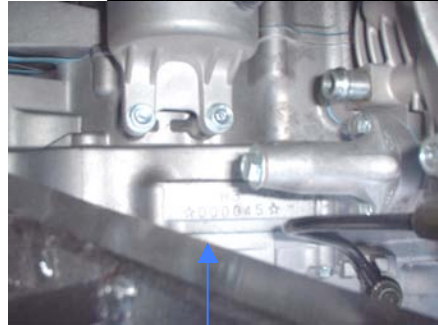
FRAME NO. RFL



FRAME NUMBER

left crankcase.

ENGINE NO. _____



ENGINE NUMBER

The engine number is engraved on bottom of

INSPECTION AND SERVICE

DATE PURCHASED: _____

AUTH. DEALER: _____

INSPECTION(1)
DATE: _____

DEALER

INSPECTION(2)
DATE: _____

DEALER

INSPECTION(3)
DATE: _____

DEALER

INSPECTION(4)
DATE: _____

DEALER

INSPECTION(5)
DATE: _____

DEALER

INSPECTION(6)
DATE: _____

DEALER

INSPECTION AND SERVICE

INSPECTION(7)
DATE: _____

DEALER

INSPECTION(8)
DATE: _____

DEALER

INSPECTION(9)
DATE: _____

DEALER

INSPECTION(10)
DATE: _____

DEALER

INSPECTION(11)
DATE: _____

DEALER

INSPECTION(12)
DATE: _____

DEALER

ASSEMBLY INSTRUCTION

For ATV-300

1. Take out the battery and fill with acid liquid. Pre-charge the battery will extend its life. The preparation and charge procedure is based on the battery's instruction.

2. Install the rear wheels and parts in the following order:
 - A. 18x40x4.5mm washer (big)
 - B. 18mm hex-bolt (torque 450~550kg-cm, 44~54N-m)
 - C. Cotter pin (open up the end after installed)
 - D. Rubber cap.

3. Install the front wheels and parts in the following order:
 - A. 18x40x4.5mm washer (big)
 - B. 18mm hex-bolt (torque 450~550kg-cm, 44~54N-m)
 - C. Cotter pin (open up the end after installed)
 - D. Rubber cap.

4. Install the front bumper.

5. Set the handle bar into the steering base. Tie-up the 4 hex-socket bolts.
6. Pull the seat-lock and remove the seat. Install the battery with the red wire to positive (+) and the black wire to the negative (-).
7. Check the oil quantity by oil gauge and fill enough unleaded gasoline to operate. Be sure the arrow mark on the fuel valve arm_petcock_is set into the correct position.(on).
8. Turn on the main switch and try to start-up the engine. In order to use the electric starter, you need to check the following:
 - A. Turn on the engine operation switch located on left handle bar
 - B. Pull the brake lever
 - C. Press the electric starter bottom to start.
9. If the vehicle is operating in a very dusty area, please add more oil on the air cleaner filter.

P.D.I. (Pre-Delivery Inspection) (For ATV-300)

- 1. Record the frame and engine number into the owner's manual.
- 2. Check that all tires have correct pressure specified on the tire or in the owner's manual.
- 3. Engine oil (4 stroke, 10W/40 or Grade SAE40) is enough
- 4. Battery is installed properly.
- 5. All brake are adjusted properly.
- 6. Fuel tank has enough gasoline to operate.
- 7. Check the suspension and drive chain for proper setup.
- 8. Check that all electrical components and lights are working properly.
- 9. Make sure that the owner's manual and tool bag are installed in the tool box.